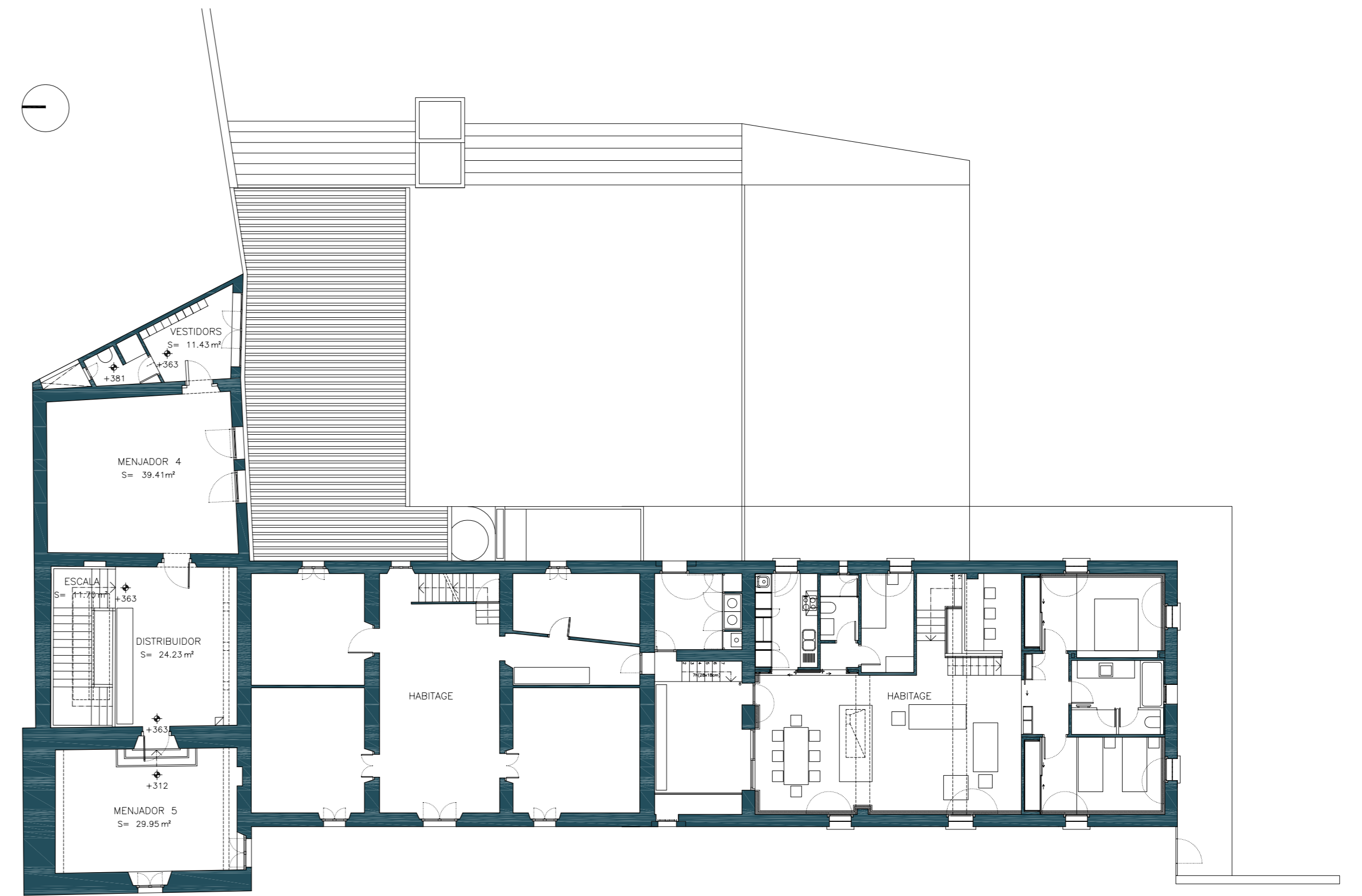
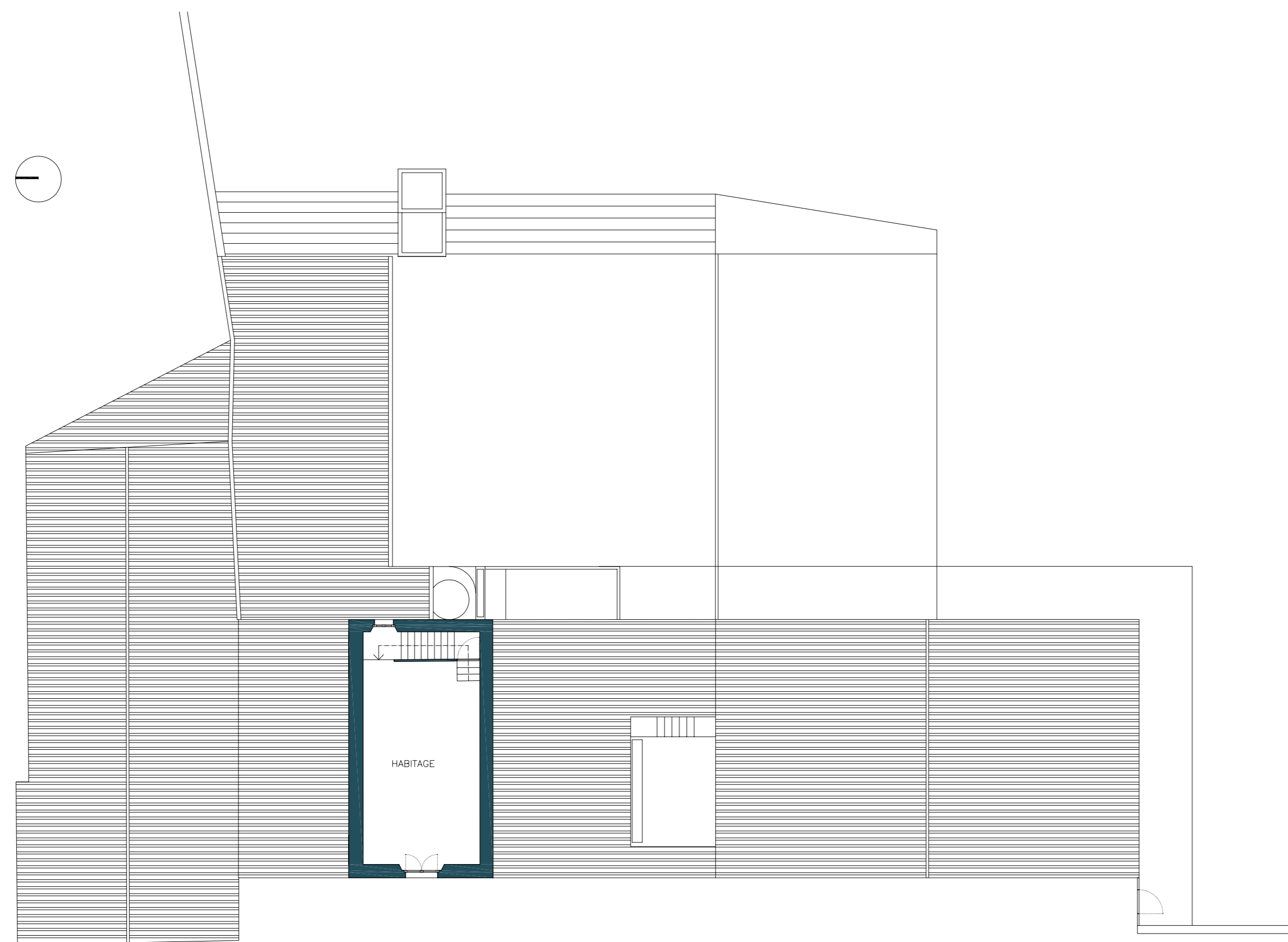


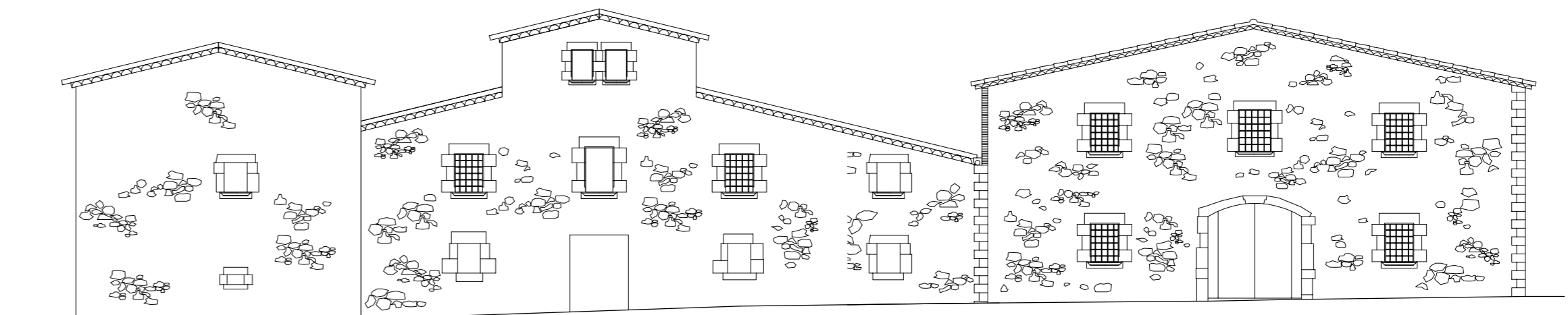
PLANTA BAIXA E:1/100 0 2 5 10 m CARRER BARCELONA



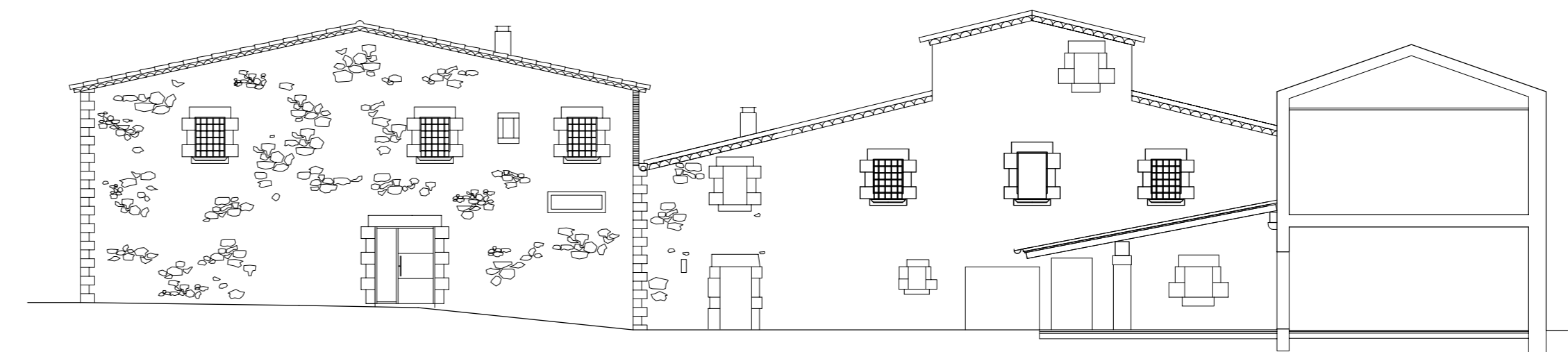
PLANTA PRIMERA E:1/100 0 2 5 10 m CARRER BARCELONA



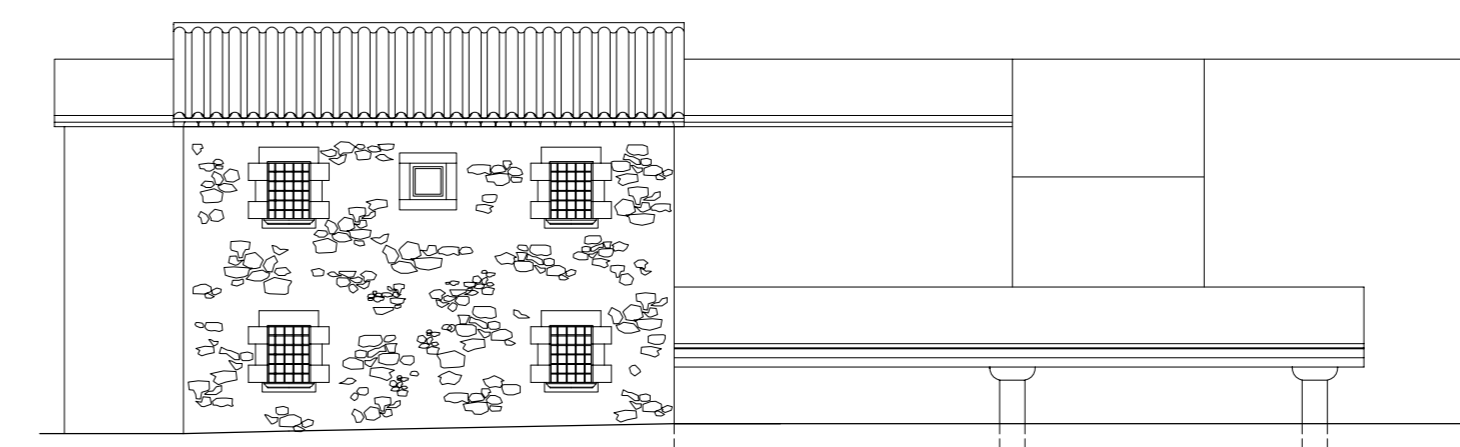
PLANTA SEGONA E:1/150 0 2 5 10 m



ALÇAT OEST E:1/150 0 2 5 10 m



ALÇAT EST E:1/150 0 2 5 10 m



ALÇAT SUD E:1/150 0 2 5 10 m

ESTUDI D'ARQUITECTURA ÀUREA S.L.P. JOAN BUSÓ PERPIÑÀ I JORDI CAMPS COSTA, ARQUITECTES			
PLA ESPECIAL "RESTAURANT L'AVELLANEDA" SITUACIÓ: CTRA. BARCELONA 483 (GIRONA) PROMOTOR: IMMACULADA BUSÓ PERPIÑÀ			ESTAT ACTUAL PLANTES I ALÇATS
REF: 2007-12	PROJECTE PLA ESPECIAL	DATA FEBRER 2008	ESCALES (DOSSIER A3 ESCALES A LA MITAT): 1/200
			5.4